

DRGb

Installation – Commissioning – Maintenance

2011223

Installation

Size of opening, see the dimension print. Place the mounting frame in the opening and secure it with screws through its short sides to the building structure. Press the diffuser face into the mounting frame to engage it. Figure 2.

Commissioning

Swegon recommends that the space behind/below the air diffuser be used as a pressure chamber. Equip the connecting duct to the relevant pressure chamber with a type CRM measurement and commissioning damper. See Figure 3.

Maintenance

The air diffuser can be cleaned, if necessary, using luke-warm water with dishwashing detergent added or by vacuum cleaning using a brush nozzle. See Figure 3.

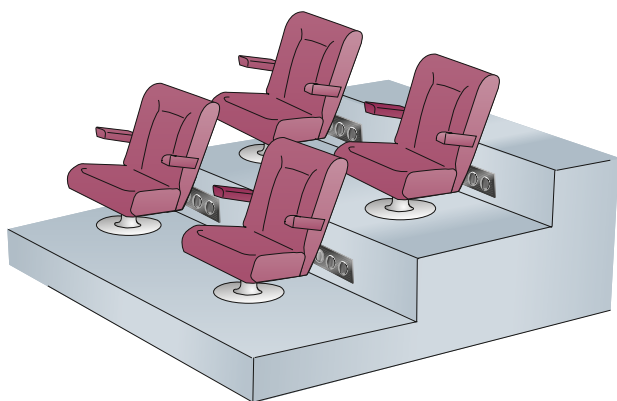


Figure 1. DRG Installation principle.

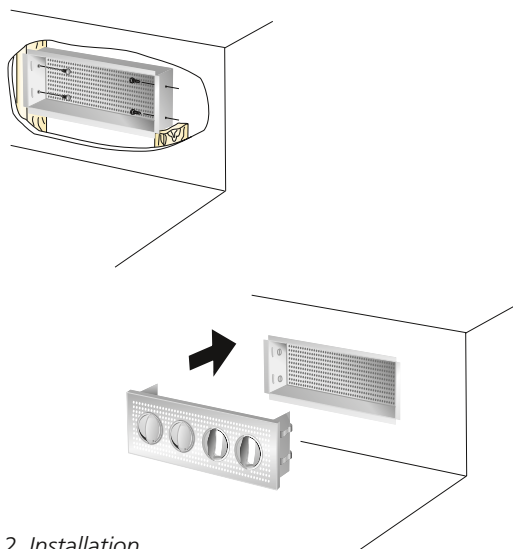
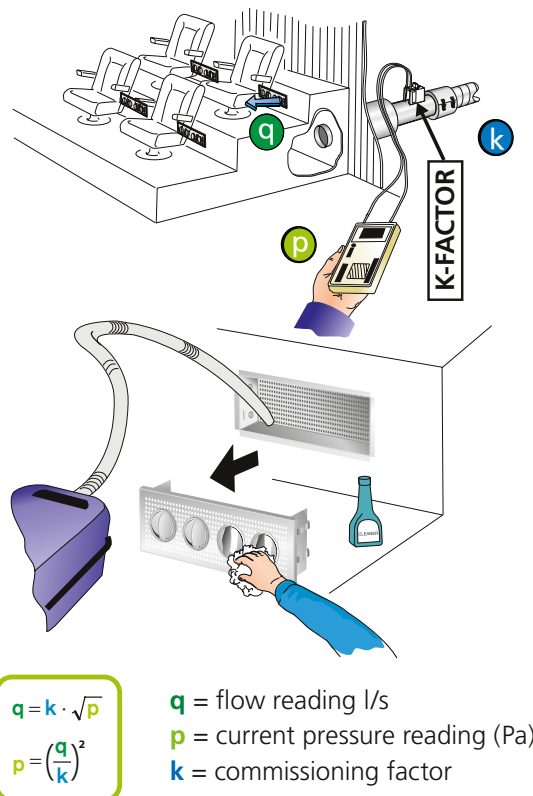


Figure 2. Installation.



$$q = k \cdot \sqrt{p}$$
$$p = \left(\frac{q}{k}\right)^2$$

q = flow reading l/s
p = current pressure reading (Pa)
k = commissioning factor

Figure 3. Commissioning. Maintenance.

Dimensions and Weights

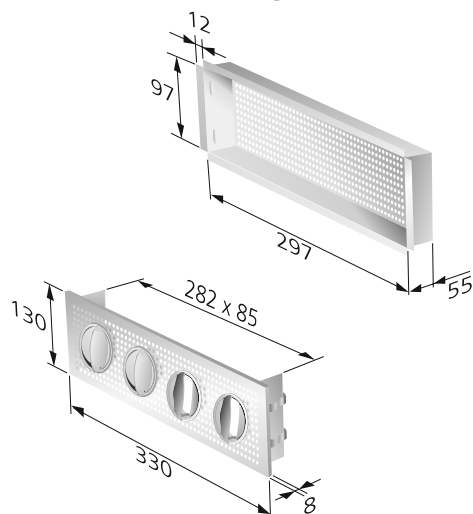


Figure 4. DRG with mounting frame.
Dimensions of the opening = 300 x 100 mm.
Weight: 1.1 kg