

**Comfort modules for  
cooling, heating and  
ventilation**

**PARASOL ZENITH FAMILY**  
A product for every need

**Swegon** 

# Optimal room comfort

The PARASOL Zenith family comprises a series of flexible comfort modules that deliver an optimum indoor climate. The comfort modules' large working range and flexible control equipment platforms make them easy to plan before, during and even after the building process. The PARASOL Zenith family consists of PARASOL Zenith, REACT Parasol Zenith, PARASOL Zenith VAV and WISE PARASOL Zenith.

Optimal room comfort is achieved as the product can manage large variations in supply air flow, cooling and heating requirements. The product's high cooling capacity enables a lower duct pressure or a higher cooling water temperature to be used, which saves energy and even improves room comfort further.

The comfort modules are designed for distributing air slightly upward, this minimizes the risk for high air speed and draught.

The infinitely variable air flow control in combination with Swegon's ADC (Anti Draught Control) offers maximum flexibility should the room layout need to be changed.

The modules are available in three sizes: 600, 1200 and 1800 and in the following variants:

- Supply air
- Supply air and cooling
- Supply air, cooling and heating

## Optional air connection side

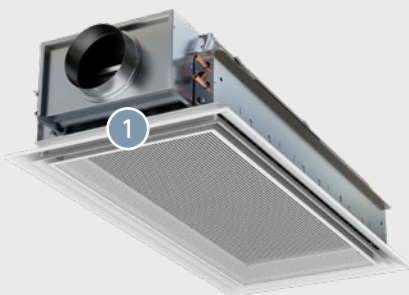
One of the features of the new PARASOL Zenith products is that all variants can be ordered with the air connection on an optional side, which facilitates planning and installation.

For air connection on side 1 the water and air connection are on the same short side. The regulation knob or actuator is then located on the opposite short side instead. For other air connection variants, the regulation knob or actuator is always placed on the same side as the water connection.

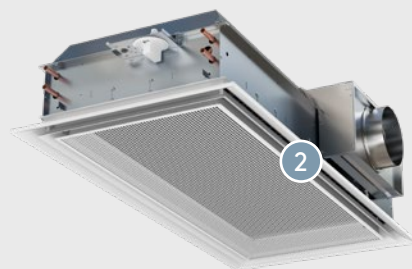
It is also possible to change the air connection side during or after planning by moving the sleeves to an optional side on site, which adds even more flexibility.

See optional air connection sides in the image below.

Air connection on side 1



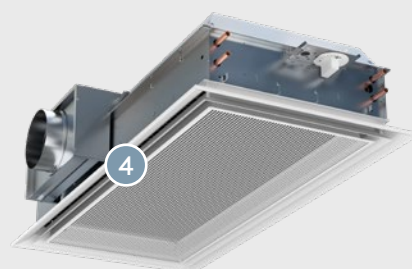
Air connection on side 2



Air connection on side 3



Air connection on side 4







# Different control platforms

The activity level in an office or conference room varies over the day. It is important to adapt the ventilation to the actual need, both for health and energy reasons. The indoor climate is strongly connected to performance, health and well-being. By controlling the indoor climate to the actual needs will result in a healthier and more productive indoor environment.

Large energy savings can be made with the right control system in the building. Simpler control options are available for existing systems or where you only need to regulate the water side.

For PARASOL Zenith there are different control options that can be adapted to the true need in the premises.

## PARASOL Zenith

PARASOL Zenith is a constant flow product which in its standard design comes with a regulation knob for simple and quick setting of a fixed air flow from the slot openings.

The product can also be integrated in the WISE system as a constant flow module with control of the water valves.

Parasol Zenith comes with a regulation knob, selectable air connection side and is also available with selectable, factory-fitted control equipment.

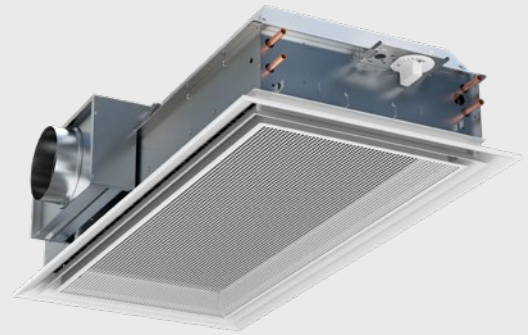
## REACT Parasol Zenith

REACT Parasol Zenith is included as part of the new REACT family, and is a simple and effective solution that ensures the indoor climate room by room in both new construction and renovation projects.

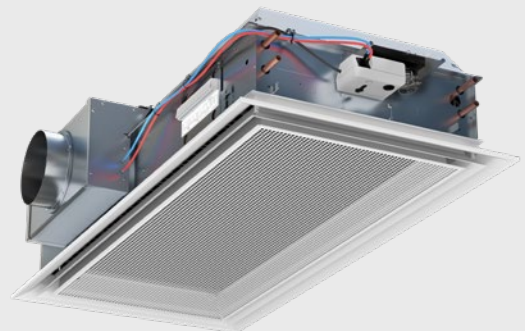
The product is an excellent choice in smaller projects such as preschools, where there are demands regarding room function but no demands regarding monitoring, system functionality or if the investment cost is a decisive factor.

The product can easily be integrated by a control equipment supplier via Modbus communication.

As standard, REACT Parasol Zenith has an actuator for flow control, a terminal block and an air connection with flow measurement. The product can also be delivered with additional, factory-fitted control equipment, such as valves and valve actuators.



PARASOL Zenith with a regulation knob and water connection on side 1 and air connection on side 4



REACT Parasol Zenith with actuators and water connection on side 1 and air connection with flow measurement on side 4

## PARASOL Zenith VAV

PARASOL Zenith VAV is a comfort module with integrated regulation. With its unique, variable slot control and large working range it's always ensured that we supply the right air flow to the room and this with our functional regulator that offers many I/Os.

The product comes with an actuator, regulator and valve actuator and can also be delivered with additional sensors. PARASOL Zenith VAV can also be easily integrated into a BMS-system via Modbus.

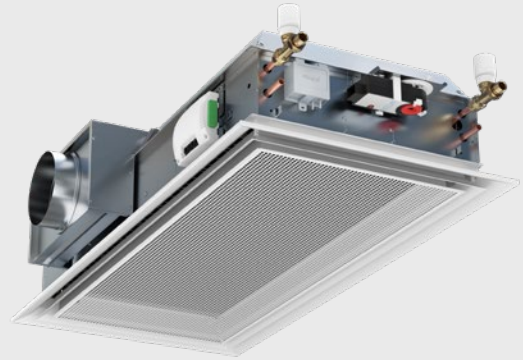
## WISE Parasol Zenith

Swegon's WISE Parasol Zenith offers unique variable air flow control and conditioning of the room.

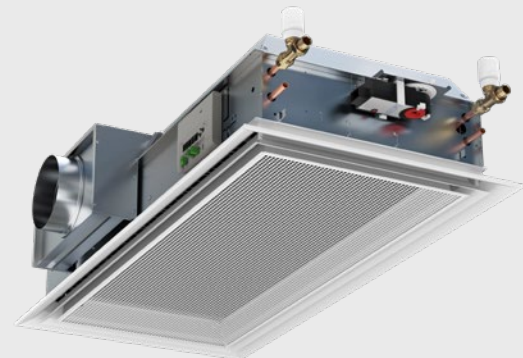
Slot control ensures that we always deliver the right air flow to the room regardless of the operating mode.

WISE Parasol Zenith with slot control is designed for demand-controlled ventilation, fully equipped with valves, actuators and control unit for wireless communications, for full integration with Swegon's WISE system.

The product comes with an actuator, regulator WISE CU and valve actuator, all connected and ready for use. The product can also be delivered with additional, factory-fitted control equipment, such as WISE SMA and WISE dewpoint monitoring.



PARASOL Zenith VAV with actuator, water connection, valve actuator on side 1 and air connection and regulator on side 4



WISE PARASOL Zenith with actuator, water connection, valve actuator on side 1 and air connection and WISE CU on side 4



## Design focus

The PARASOL Zenith family are designed comfort modules with flush integration to ceilings, which gives a stylish and discreet installation.

The modules are also available in different colours. Architects can be creative with the design and the modules can blend in any indoor environment while at the same time being aesthetically pleasing.

## Selectable perforation pattern

As standard the face plate is available in three different perforation patterns.

- Circular holes arranged in a square pattern
- Circular holes arranged in a square pattern with a graduated transition
- Square holes arranged in a square pattern with a graduated border



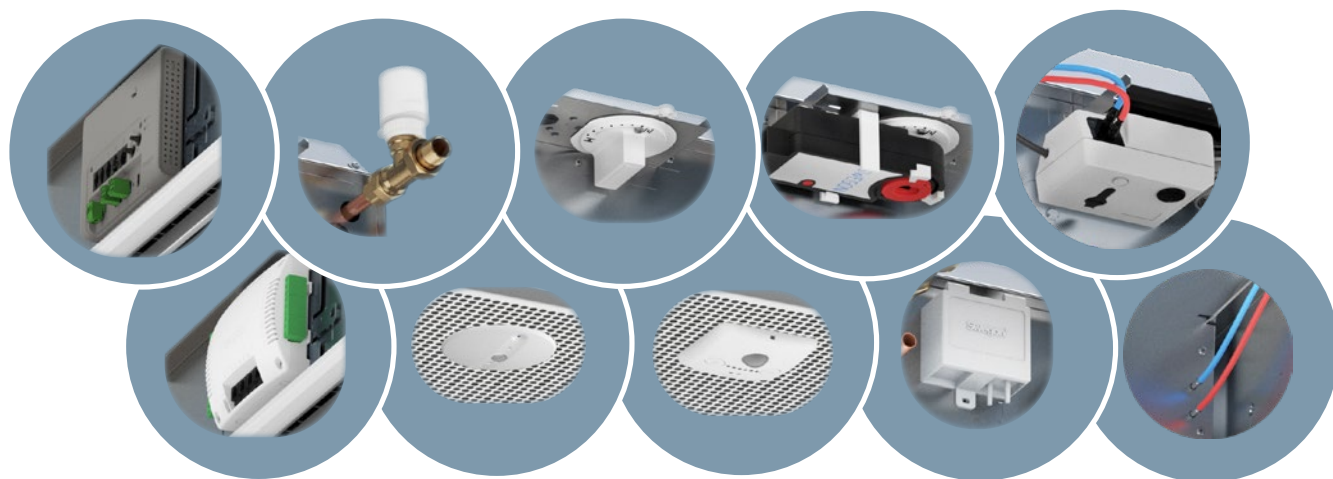






# Adapt the product according to the need

Equip PARASOL Zenith to suit just your needs. When ordering, the product can be adapted exactly to meet your needs. Add or remove accessories so tailor we the product from the factory, completely according to your wishes.







## A long-term partner

### Local presence

Swegon has a network of qualified engineers and technicians near you. They carry out commissioning of ventilation systems, repairs and maintenance.

Our spare parts warehouse carries parts and accessories, including for older versions of our products.

### Expertise

Swegon's technicians have solid expertise in ventilation, cooling and indoor climate systems. Swegon is committed to maintaining its industry lead, and attaches great importance to training and upskilling our technicians on the latest advances in the industry.

In this way, we always have the right resources and capabilities to assist you in achieving and maintaining dependable systems.

### Operation & maintenance

Our comprehensive services comprise commissioning of diverse system solutions, together with troubleshooting, repairs and maintenance services. We also offer monitoring of your facility, including software updating and fault prevention services.

### Aftersales service

Swegon strives to assist its customers, wherever you're located, to identify the right solution for your premises. For refurbishment projects, we can help to propose the ideal solution for you in relation to space, operating costs and building use. Naturally, we can also assist you in both de-installation and installation of new products and solutions.

In the unlikely event that any product or service from us fails to perform as expected, you have the peace of mind of our product warranty.

Feel good **inside**

